

**Leonard Enterprises, Inc.**

**SUPERIOR - Service. Innovation. Technology.**

## UT-1000 VIBRATORY SCREEN SEPARATOR

- Dual Separation or Single Separation—Screens size determined by customer. Interchangeable screens
- Variable Control—Adjust shaking power with ease.
- 208-230/460/60/3 Standard Motor—120/240/1 Available
- Portable—Comes standard with casters. One set locking.
- Sizes—Standard 24x48 Screening Area (72"L x 30"W x 24"H)
- Completely Customer Configurable—Tell us what you want and we will design it to your specifications.
- Stainless Steel—Complete Stainless or Stainless Tray only models available
- Call for pricing



***Leonard Enterprises, Inc.***

6665 View Park Court  
Riverside, CA 92503

Phone: 951-785-5566

Fax: 951-785-5870

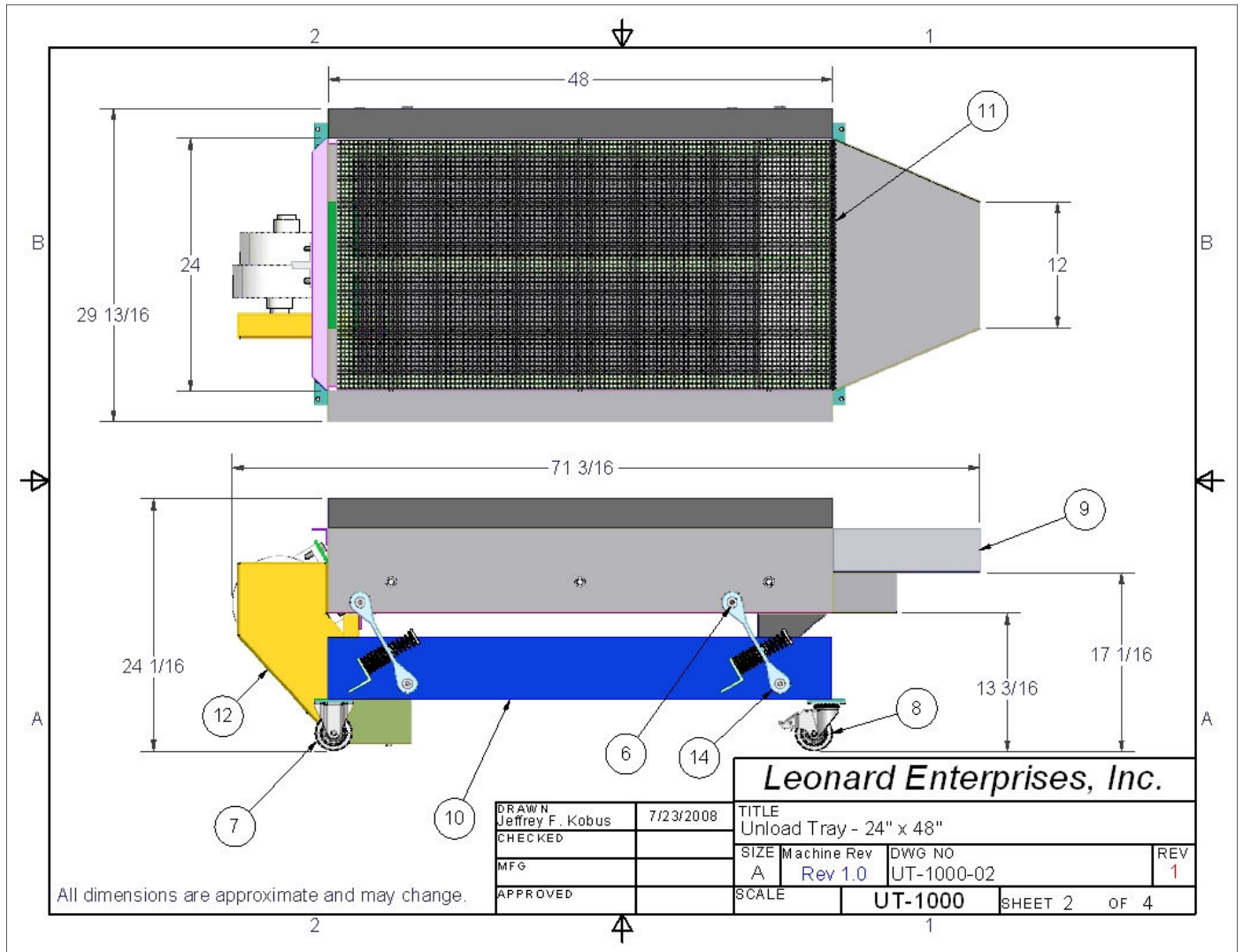
[www.leonardenterprises.com](http://www.leonardenterprises.com)

E-mail: [hank@leonardenterprises.com](mailto:hank@leonardenterprises.com)

# UT-1000

## 24" x 48"

### Standard Design



## Leonard Enterprises, Inc.

6665 View Park Court  
 Riverside, CA 92503  
 Phone: 951-785-5566  
 Fax: 951-785-5870  
[www.leonardenterprises.com](http://www.leonardenterprises.com)  
 E-mail: [hank@leonardenterprises.com](mailto:hank@leonardenterprises.com)